



## PRODUCT CATALOGUE

Manufacturers & Suppliers  
of R.C.C. Hume Pipes  
& Other Precast  
Concrete Products

Established Since 1988

**MALLIKARJUN  
PIPES & CEMENT  
PRODUCTS PVT. LTD.**

ASSOCIATE UNITS :

**MALLIKARJUN  
GROUP OF INDUSTRIES**

**RAJASHREE PIPES &  
CEMENT PRODUCTS**

**[www.rccpipesgoa.com](http://www.rccpipesgoa.com)**



CM/L-7700121113



## RCC HUME PIPES (CONCRETE PIPES)

- Casting of pipes is done by spinning process method where mechanically mixed wet concrete with suitable consistency & uniformity is placed in rotating outer mould and consolidation of concrete is achieved by vibration and compaction in combination with centrifugation.
- Using the above method, the finishing of pipes is achieved very smooth from inner & outer surfaces which no other method can achieve and thus giving robust, leakproof, long lasting and excellent quality concrete pipes.
- Sizes available from **100 mm** inner diameter up to **1800 mm** inner dia. In all three classes **NP2, NP3 & NP4** with length option of **1.25 m, 2.0 m & 2.5 meters** and ends of the pipes available in: plain ended type (collar jointed), Flush jointed type (inbuilt male-female type) & Spigot & Socket Type (inbuilt attached collar joint).
- Application of these type of pipes are for water mains, sewer, irrigation, culverts/ cross drains, storm water drainage, electrical cabling and various other applications.
- **Half round pipes** are also supplied from 100 mm inner dia. to 900 mm inner dia.
- Our RCC Pipes are manufactured with minimum **M-35 mix design** and tested as per **IS 458: 2021 & IS 3597: 1998 BIS specifications.**
- We are currently holding **ISI Marking License** for our RCC Hume Pipes from 250 mm dia. to 1200 mm dia. in all NP2, NP3 & NP4 class under brand name '**MPCPPL**'.



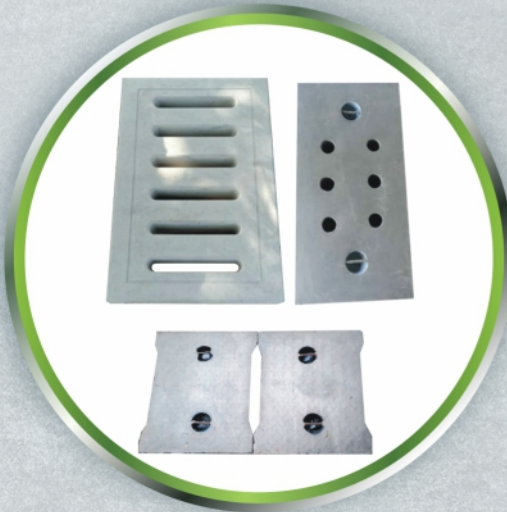
## RCC OVERHEAD ELECTRICAL POLES

- Manufactured & Tested as per IS 785/1998 & IS 2905/1989.
- Manufactured in a lengths of **7.5 m, 9.0 m & 11.0 m** Approved by GED.
- Lifting & stacking of the Poles is done by fully automatic remote controlled Overhead electric Hoist & travel crane.





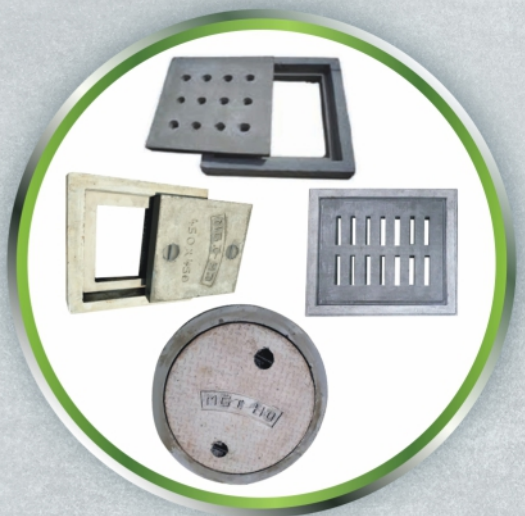
## PRECAST RCC DRAIN SLABS / COVER



- Available in all sizes with option of different thickness for the slab, in different shape/pattern (Plain, Slotted, Gratings, I shape) & finish (Plain or Chequered).
- Manufactured with Minimum of M-25 concrete grade, **MECHANICALLY COMPACTED BY VIBRATORY PLATFORM**, Provided With Ms Hook With PVC Cup For Lifting.
- Commonly supplied sizes are:
  - i) 600 mm x 500 mm x 100 mm / 150 mm,
  - ii) 750 mm x 400 mm x 100 mm / 150 mm,
  - iii) 900 mm x 400 mm x 100 mm / 150 mm,
  - iv) 1200 mm x 400 mm x 100 mm / 150 mm

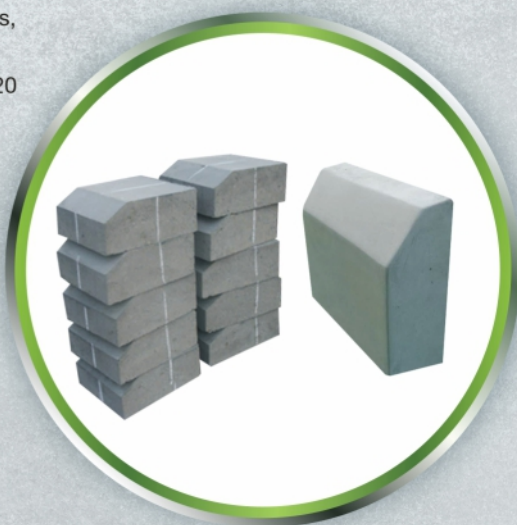
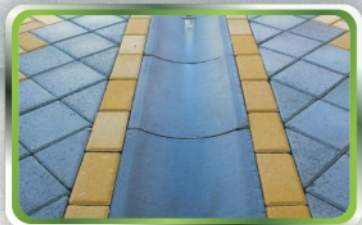
## RCC & SFRC MANHOLE / CHAMBER COVER (WITH FRAME)

- Manufactured & Tested as per is **12592/ 2002 BIS** Specifications.
- Available in all shapes (Square / Rectangular / Circular) in light / medium/ heavy / extra heavy duty.
- Commonly supplied sizes are:
  - i) 300 x 300 mm
  - ii) 450 x 450 mm
  - iii) 450 x 600 mm
  - iv) 600 x 600 mm
  - v) 540 mm dia
  - vi) 600 mm dia



## PREFABRICATED KERBSTONES / ROAD DIVIDERS

- Used as Footpath Side Kerbs, Garden Kerbs, Dividers.
- Kerbstone manufactured with minimum M-20 concrete grade mechanically on vibratory platform & as well as on Automatic Hydraulic Press Machine.



## INTERLOCKING PAVERS

(Hydraulic Press Interlocks & Rubber Moulded)

- Anti-skid Interlocking Pavers are manufactured in various design / shape (Brick, Zigzag, I-Type, Cosmic & Other) available in different thickness (40 mm / 60 mm / 80 mm & 100 mm) & in many colours (Grey / Red / Yellow/ orange/ black etc.) in **m25 / m30 / m40 / m50**.
- Chequered tiles also available in size 300x 300 mm & 400 x 400 mm in 25 & 30 mm thickness.
- **New Machine with German Technology** Vibro + Hydro Fully Automatic block making machine with auto pallet stacker has been set up at one of our manufacturing unit, manufacturing **Bricks / CC Blocks / Pavers & Kerbstone**.





## READYMADE RCC SEPTIC TANK & WATER TANK



- Machinmade RCC cylindrical tanks are available in many **Storage Capacity** (Starting from 500 L to 7200 L).
- Available in vertical as well as horizontal laying.
- Maintenance free, trouble free functioning, with stands all kinds of load & vibrations, movable / portable when necessary due to its precast structure
- Guarantees against leakages & high durability.
- Internationally approved design for septic tank.

## CONCRETE BLOCKS / BRICKS

- Latest Technology is used in manufacturing of CC Blocks with minimum **compressive strength of 5 N/MM<sup>2</sup>**
- Sizes Available: **400 MM X 200 MM IN (100 MM/ 150 MM & 200 MM)** thickness in Solid & Hollow type.
- CC Bricks / Flyash Bricks available in size of 230 mm x 110 mm x 75 mm.



## PRECAST RCC DOOR FRAME

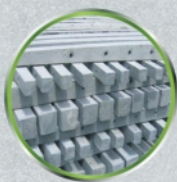
- **(Economic / Eco-Friendly & Durable)**
- RCC Door frame & Window frame available as interlocking vertical & horizontal members provided with machinable **Poly-Acrylic Blocks** for easy fixing of hinges / latches / tower bolts.
- Made with minimum M-40 mix design, in two sections **(100 MM X 60 MM) & (125 MM X 60 MM)** in different pattern (Plain / Moulding / Chamfer / Double Rebate).
- Width option of 600 MM to 1800 MM & height options from 1800 MM & 2400 MM.



## OTHER PRECAST CONCRETE PRODUCTS



RCC  
WELL RINGS



RCC  
FENCING  
POLES



READYMADE  
COMPOUND  
PANEL WALL



RCC  
WINDOW &  
FENCING GRILL



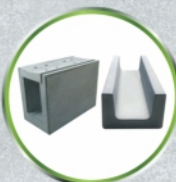
BOUNDARY &  
KILOMETER  
STONES



RCC  
GARDEN  
BENCHES



RCC  
TREEGUARD



PRECAST  
RCC  
U DRAIN



RCC  
INSPECTION  
CHAMBERS



CABLE  
ROUTE  
MARKER



## KEY FEATURES

- **ISO CERTIFIED Manufacturing Facility**
- **ISI Marking for RCC Hume Pipes**
- **Approved Vendor at GSIDC, Panaji Goa**
- Empanelled unit at GHRSSIDC Panaji Goa for supply of precast items to Govt. Of Goa Depts. Esp. PWD, WRD, GED, Municipality & Village Panchayat offices
- **Govt. Approved Rates**
- Constant product availability
- On Time Delivery & Service
- Customer Satisfaction & Excellent Reviews.
- Unloading of material by Truck Mounted Crane, Thereby Avoiding Damages
- Good workmanship & better finished product
- **Automatic & Semi Automatic Machinery.**
- In house Testing Facilities for all products with Independent QC Lab
- Continuous supplies on major **Turnkey Projects** in the State of Goa – Highways Roads Project etc.
- Supplies to Airport Authority, **Defence Projects** (Seabird Karwar, DGMAP Projects Goa & Karnataka, MES Goa), Konkan Railways etc.



## PRODUCT TESTING



**3-EDGE LOAD TEST  
RCC HUME PIPE**



**CTM  
MACHINE**



**ELECTRIC POLE  
TESTING**



**HYDROSTATIC TEST  
RCC HUME PIPE**



**MANHOLE COVER LOAD  
TESTING MACHINE**



## NEW MACHINERY



**FULLY AUTOMATIC  
VIBRO + HYDRO MACHINE**



**TRIPLE VIBRATED  
CC BLOCKS MAKING MACHINE**

Installed at 'RAJASHREE PIPES' Unit at Shirwad, Karwar



## **MALLIKARJUN PIPES & CEMENT PRODUCTS PVT. LTD.**

**&**

## **MALLIKARJUN GROUP OF INDUSTRIES**

Both Units Located At Dhullgali, Shelim, Polem, Canacona - Goa - 403728

## **RAJASHREE PIPES & CEMENT PRODUCTS**

Located at Plot No. 27/a, Kiadb Shirwad Industrial Area, Shirwad,  
Karwar, Karnataka - 581306

### **CONTACT US**

Registered Office Address : 105, Mallikarjun Prassan, Behind Sitara Bajaj Motors,  
Near Posh School, Colmorod, Margao, Goa - 403707

☎ 0832- 2734013, 94059 20877, 80107 48740, 94220 61041

✉ mallikarjun99@yahoo.com, enquiry@rccpipesgoa.com

☎ Factory: 0832-2640657, 94044 37250, 82081 84271, 965752 2820

🌐 [www.rccpipesgoa.com](http://www.rccpipesgoa.com)